



**Specify and purchase Certi-label[®]
on-grade, code-compliant cedar
shakes and shingles.**

Published as a
consumer service.

Know the FACTS.



REJECT off-grade shake and shingle products. Off-grade, non-code-compliant products are subject to a building code official's red tag/stop work order and imminent tear off.

SHAKE LABEL: WHAT TO LOOK FOR

HOW TO READ A CERTI-LABEL®


©2017 004

CERTI-SPLIT®

NUMBER 1 GRADE

Handsplit Red Cedar Shakes
CEDAR SHAKE & SHINGLE BUREAU
 THE RECOGNIZED AUTHORITY SINCE 1915
 SUMAS WASHINGTON (604) 820 7700

**LIFETIME LIMITED WARRANTY AVAILABLE FROM CSSB MEMBER MANUFACTURER BELOW
 WHEN APPLIED BY A CSSB MEMBER CONTRACTOR/INSTALLER**

Quality Control Agency Logo	 Cedar Shake & Shingle Bureau Label ID Number	Building Code Standards
Mill Quality Certification Number		Product Testing Numbers

Litho in Canada www.cedarbureau.org Country of Manufacture

Mill Name
 Mill Location
 Mill Phone Number

7 20454 00004 2

ENVIROSMART®

PACKING

HEAVY RESAWS
24" x 3/4"
 (610.0 mm X 19.0 mm)

COVERAGE CHART	
100 sq. ft. (9.30 m ²)	
BUNDLES	EXPOSURE
5	10" (254 mm)

1. The "Certi" Brand Name - Your Quality Assurance
2. Product Grade
3. Product Type
4. Independent, 3rd Party, Quality Control Agency
5. This Number Shows Compliance with Total Quality Manufacturing System
6. Mill Name, Location and Phone Number
7. Industry Product Description

8. Product Dimensions
9. Cedar Bureau Label Number
10. Building Code Compliance Numbers
11. Product Performance Tests Passed
12. Label Identification Number
13. UPC Code
14. Coverage Chart and Recommended Exposure
15. Application Instructions on Reverse Side


SHINGLE LABEL: WHAT TO LOOK FOR

HOW TO READ A CERTI-LABEL®

© 2015 407


CERTIGRADE®
Red Cedar Shingles
 - 100% Edge Grain - 100% All Clear -
 - 100% Heartwood -
CEDAR SHAKE & SHINGLE BUREAU
 THE RECOGNIZED AUTHORITY SINCE 1915
 SUMAS, WASHINGTON (604) 820-7700

**LIFETIME LIMITED WARRANTY AVAILABLE FROM CSSB MEMBER MANUFACTURER BELOW
 WHEN APPLIED BY A CSSB MEMBER CONTRACTOR/INSTALLER**

Quality Control Agency Logo	 Cedar Shake & Shingle Bureau Label ID Number	Building Code Standards
Mill Quality Certification Number		Product Testing Numbers

Litho in Canada www.cedarbureau.org Country of Manufacture

Mill Name
 Mill Location
 Mill Phone Number


 7 20454 00004 2

ENVIROSMART®

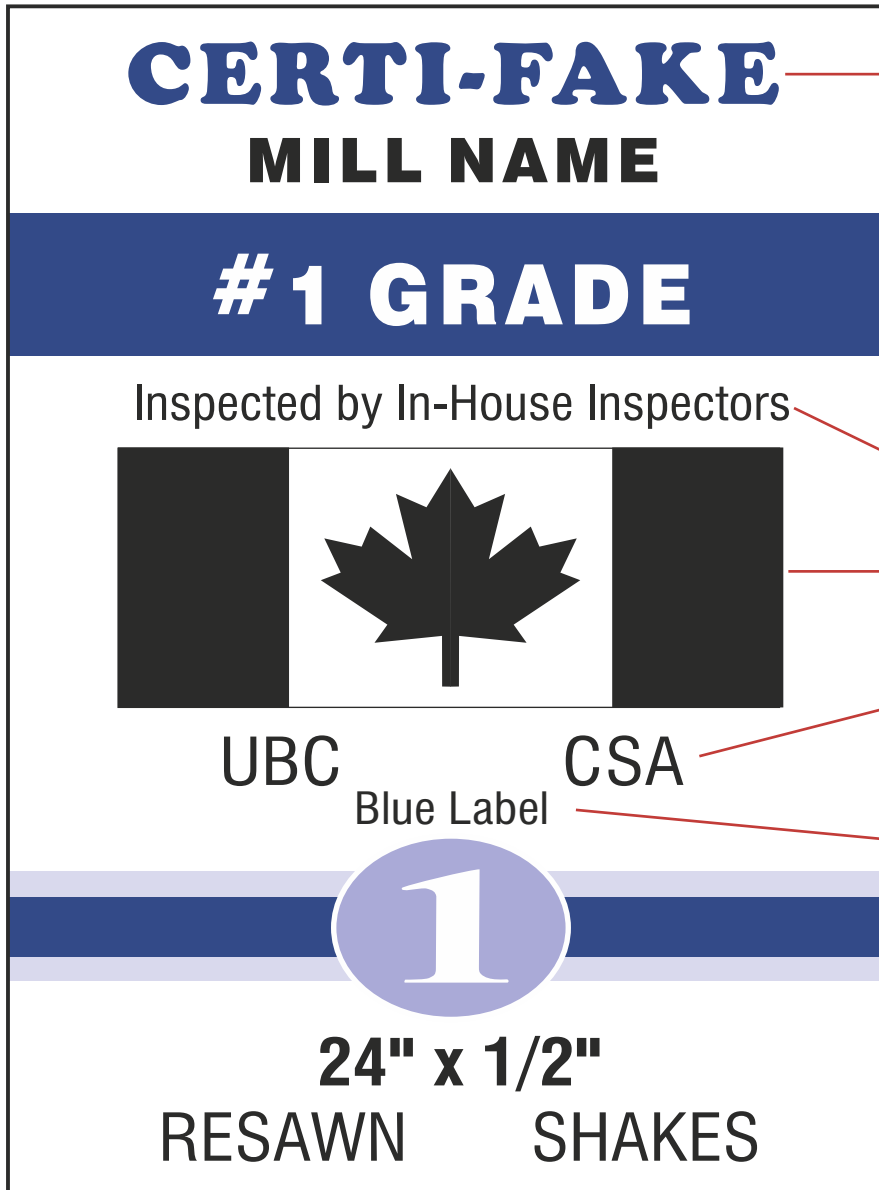
ROYAL
24" X 4 / 2" (610.0 mm X 19.0 mm)

PACKING	
COVERAGE CHART 100 sq. ft. (9.3 m ²)	
BDLES	EXPOSURE
4	7 1/2" (1900 mm)

- | | |
|---|--|
| 1. The "Certi" Brand Name - Your Quality Assurance | 8. Product Dimensions |
| 2. Product Grade | 9. Cedar Bureau Label Number |
| 3. Product Type | 10. Building Code Compliance Numbers |
| 4. Independent, 3 rd Party, Quality Control Agency | 11. Product Performance Tests Passed |
| 5. This Number Shows Compliance with Total Quality Manufacturing System | 12. Label Identification Number |
| 6. Mill Name, Location and Phone Number | 13. UPC Code |
| 7. Industry Product Description | 14. Coverage Chart and Recommended Exposure |
| | 15. Application Instructions on Reverse Side |

Be Aware of Questionable Labels

This is a fictitious label showing an amalgamation of misleading information seen in the marketplace.



Copying CSSB Members' label design, font style, and color is misleading and tries to fool the consumer. Make sure what you are buying is legitimately Certi-label® product.

Is not a legitimate third party inspection agency

Does not imply "government certification"

Specific code number references should be listed. Is inspection agency accredited by these standard organizations?

Blue Label® is a registered trademark of the CSSB. Non-Members are not permitted to use this on their labels.

CSSB Registered Trademarks

CSSB registered trademarks include the following found on CSSB Member Manufacturer product labels: Certigrade®, Certi-Sawn®, Certi-Split®, Certigroove®, Certi-Cut®, Certi-Ridge®, Blue Label®, Envirosmart® and Cedar Shake and Shingle Bureau® are also registered trademarks of the CSSB. CSSB registered trademarks include the following

found on CSSB Member Treater labels: Certi-Last® or Certi-Guard®. CSSB Member Treater labels will appear in addition to a CSSB Member Manufacturer product label. Certi-Label® and Certi-Wood® are registered trademarks of the CSSB referring to the family of trademarks only available for Member use.

EDGE GRAIN versus FLAT GRAIN

Here are some diagrams to help explain what to look for:

FLAT GRAIN

Flat grain is restricted by grade. No flat grain is permitted in Premium Grade shake or Number 1 Grade shingle products. Up to 20% per bundle is allowable in Number 1 Grade shake products.



Flat Grain (Butt End)



Edge Grain (Butt End)



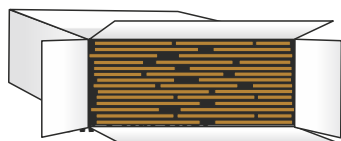
Flat Grain Surface

COVERAGE

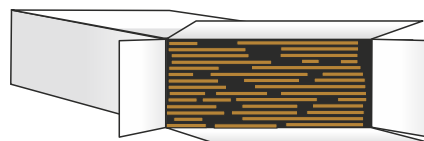
Coverage is the amount of roof or wall area the on-grade product in a bundle or carton will cover.

COVERAGE

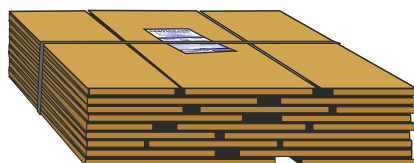
Some manufacturers cheat by not putting the correct amount of ON-GRADE coverage (i.e. lineal inches) in bundles and/or cartons. Others make cartons that look full but are actually smaller than standard size. Read the official grading rules and compare them with how much the bundle or carton holds: http://www.cedarbureau.org/green_products/supporting-documents/grading-rules.asp. Much like serving quantities of food, the calorie count doesn't always match the full contents of the container.



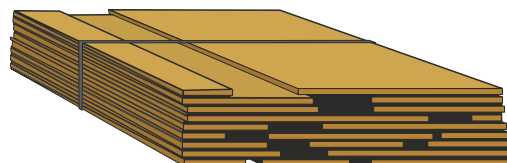
Good Coverage



Low Coverage (look out for substandard sized cartons too)



Good Coverage



Low Coverage

REJECT THIS:



Unpermitted knots within a bundle



Thin Product, Off Grade

REJECT THIS:



18" x 5/8" Tapersawn Shakes. Bundle was opened and when graded was found to contain excessive narrow shakes.



Excessive Flat Grain

- 1) Annual growth rings form an angle of less than 45° with the face of the piece
- 2) Number 1 Grade Shakes – no more than 20% of the on-grade lineal inches in any bundle may be flat grain
- 3) Premium Grade Shakes & No 1 Grade Shingles do not permit any flat grain.

REJECT THIS:



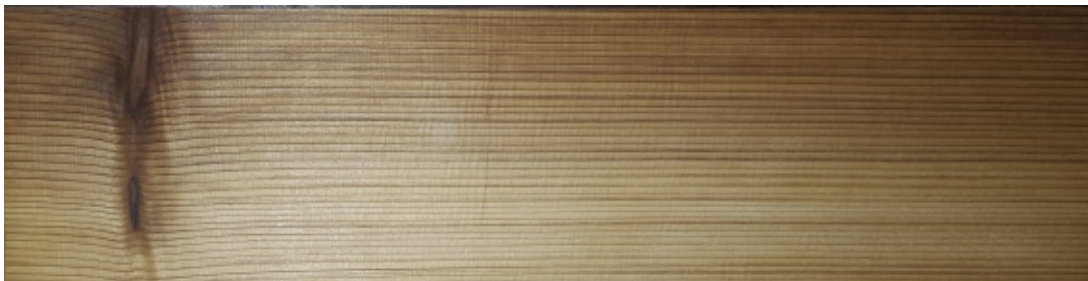
Short Shim Off Grade



Narrow Off Grade



Bark Off Grade



Knot Off Grade

REJECT THIS:



Cross Grain Off Grade



Worm Hole Off Grade



Bundle with no label or label without legitimate third party inspection. If you do specify CSSB member product, then ONLY Certi-label® brand product meets your specification for this job. The top of each label will have a Certi-brand name such as Certi-Split®, Certi-Sawn®, Certigrade® etc.; the CSSB logo * is displayed at the center of the Certi-label®. The code-mandated, independent third party inspection agency is also displayed on the Certi-label®.



BUYING ON PRICE?

SHORT-TERM THINKING RESULTS IN:

- Off-grade material at job site that violates building code
- Buying additional product to make up for short coverage
- Increased number of culls
- Extra labor hours
- Call backs
- Legal costs to distributors
- Accusations of fraudulent business practices



VERSUS

BUYING ON QUALITY.

LONG-TERM THINKING RESULTS IN:

- Longer lasting, best value products
- Longer life expectancy with products inspected by an accredited third party agency
- Homeowner can obtain a viable limited warranty
- Satisfied customers
- Positive word of mouth advertising and reputation
- Long-term industry success



Code Required /Recognized Grading Rules:

<http://www.cedarbureau.org/green-products/supporting-documents/grading-rules.asp>



Contact a member: <http://www.cedarbureau.org/purchasing>

WEB: www.cedarbureau.org | PHONE: 604-820-7700 | EMAIL: info@cedarbureau.com



Published in Canada December 2018